

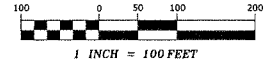
Carrington Development, LLC

Please call Steve@ 612-221-4476

SUNRISE PINES

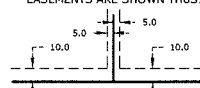
FOR THE PURPOSES OF THIS PLAT, THE EAST LINE OF THE NORTHEAST QUARTER OF THE SOUTHEAST QUARTER OF SECTION 35, TOWNSHIP 34, RANGE 22 IS ASSUMED TO HAVE A BEARING OF SOUTH 02 DEGREES 02 MINUTES 25 SECONDS EAST.

GRAPHIC SCALE



NORTH

DRAINAGE AND UTILITY EASEMENTS ARE SHOWN THUS:

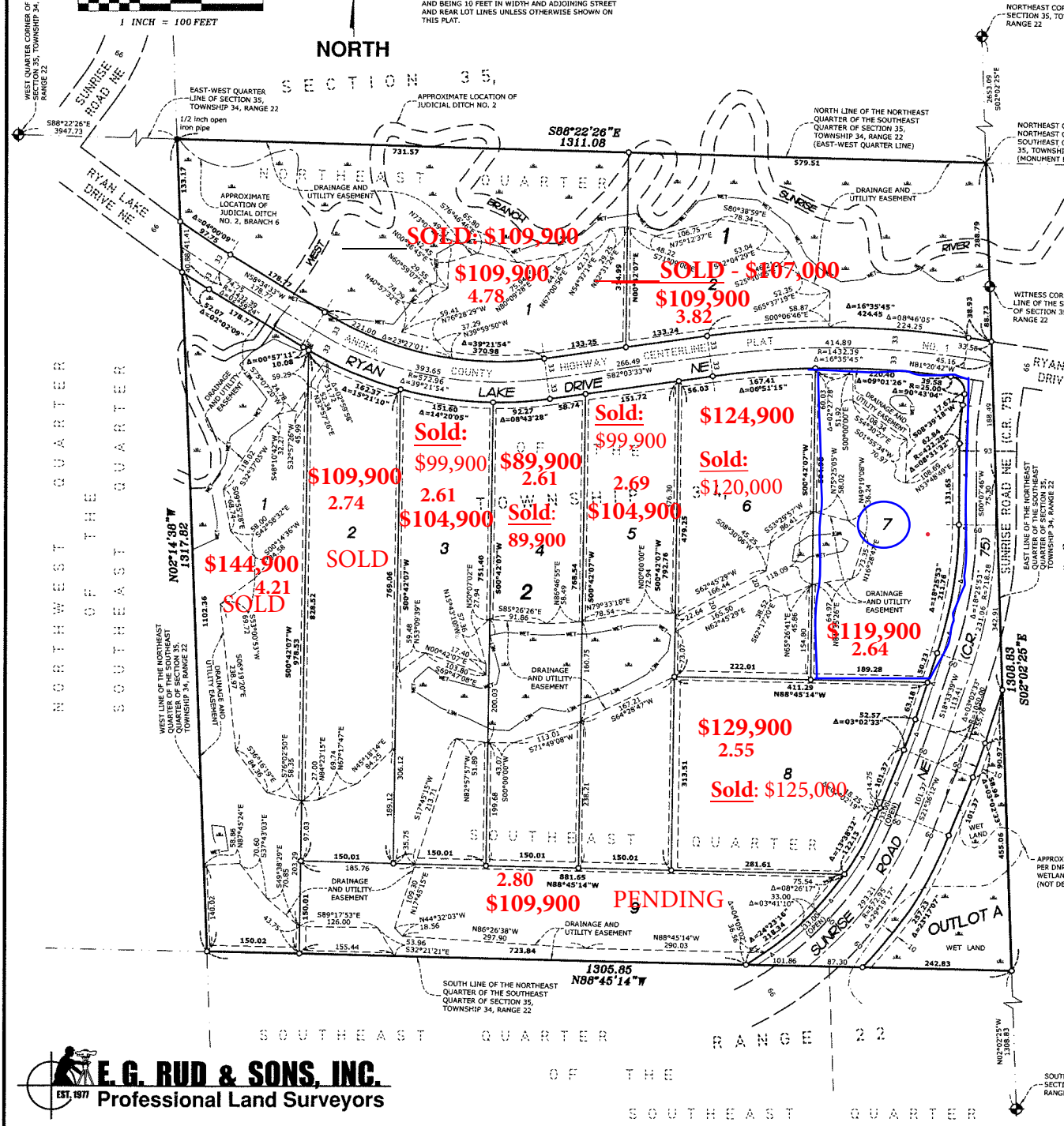


BEING 5 FEET IN WIDTH AND ADJOINING SIDE LOT LINES AND BEING 10 FEET IN WIDTH AND ADJOINING STREET AND REAR LOT LINES UNLESS OTHERWISE SHOWN ON THIS PLAT.

LEGEND

- DENOTES IRON MONUMENT FOUND AS LABELED
- DENOTES 1/2 INCH BY 18 INCH IRON PIPE SET, MARKED RLS NO. 41578
- DENOTES ANOKA COUNTY CAST IRON SECTION MONUMENT
- ▬ DENOTES RIGHT OF ACCESS DEDICATED TO ANOKA COUNTY
- ▭ DENOTES WETLANDS DELINEATED BY KJOLHAUG ENVIRONMENTAL SERVICES COMPANY IN 2021, UNLESS OTHERWISE NOTED

PLAT FILED FOR RECORD ON Monday, February 27, 2024 at 1:52:11 PM
 BY: E. G. RUD & SONS, INC., SURVEYORS
 1111 W. WASHINGTON AVENUE, SUITE 100
 MINNEAPOLIS, MN 55408
 TEL: 612.221.4476 FAX: 612.221.4477
 E-MAIL: SURVEY@EGRUDSONS.COM



E. G. RUD & SONS, INC.
 EST. 1977 Professional Land Surveyors

- Lot 1 Block 1: \$109,900
- Lot 2 Block 1: \$109,900
- Lot 1 Block 2: \$144,900
- Lot 2 Block 2: \$109,900
- Lot 3 Block 2: \$104,900

- Lot 4 Block 2: \$89,900
- Lot 5 Block 2: \$104,900
- Lot 6 Block 2: \$124,900
- Lot 7 Block 2: \$119,900
- Lot 8 Block 2: \$129,900
- Lot 9 Block 2: \$109,900